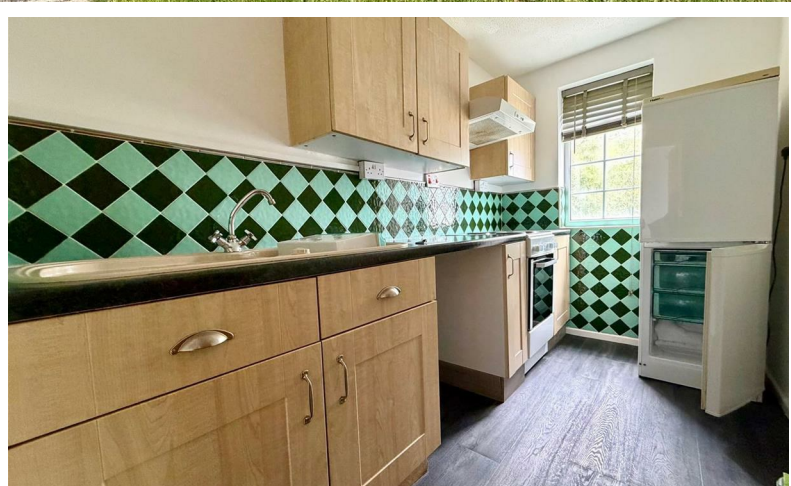




READINGS

www.readingspropertygroup.com



£650 Per Month

41 Sycamore Close, Burbage, Hinckley, LE10 2JU

41 Sycamore Close, Burbage, Hinckley, LE10 2JU

What a super little property! This ground floor maisonette lies in a quiet cul-de-sac in the ever popular area of Burbage. It offers great access to Hinckley, the M69 and A5. It's got night storage heaters and UPVC double glazing and is in clean and tidy order throughout. You'll find an external porch, lounge, inner lobby, kitchen with cooker, bedroom and bathroom. Outside there are pleasant communal gardens and communal parking to the rear. Viewing a must!

Reception Lobby

Lounge

16'4" x 9'6" (5m x 2.9m)

Inner Lobby

Kitchen

9'10" x 5'6" (3m x 1.7m)

Bedroom

11'5" x 10'2" max 7'6" min (3.5m x 3.1m max 2.3m min)

Bathroom/WC

Rightmove Viewing Procedure

1. Send an email enquiry through Rightmove and fill in the preliminary application form with your details

2. Please be as honest as possible with your information. For example, if you believe that you have a bad credit rating, let us know now - it will only show up on your credit check if you don't!

3. We will discuss your application with the landlord. If they are happy, we will book a physical viewing at the property

4. After the viewing you will provide your feedback on the automatic feedback form. If the landlord selects

your application, you will pay a 1 week's rent holding deposit and proceed to the referencing

5. Once the references are complete and acceptable, you will book your move in date. The contract will be sent out the week before

6. You will need to pay your first months rent and deposit a few days before your move in date (minus the 1 week's rent holding deposit you already paid)

7. You will need to bring your original passport with you on the day you collect the keys for the physical Right to Rent checks

Agent's Note

CONSUMER PROTECTION LEGISLATION - These sales details have been written to conform to Consumer Protection Legislation. Whilst we endeavour to make our sales details accurate and reliable, if there is any point of particular importance to you, please contact the office and we will check the information for you, particularly if contemplating travelling some distance to view. Measurements are given in good faith and whilst believed to be accurate these should be checked by the purchaser for verification. The measurements are carried out in accordance with the RICS and ISVA code of measuring practice.

